

# Framing Accessories

## Manual Disk Sander

*Our benchtop disk sander was designed to true-up mitre cuts to a perfect 45 degree angle, ensuring perfect alignment when assembling frames.*

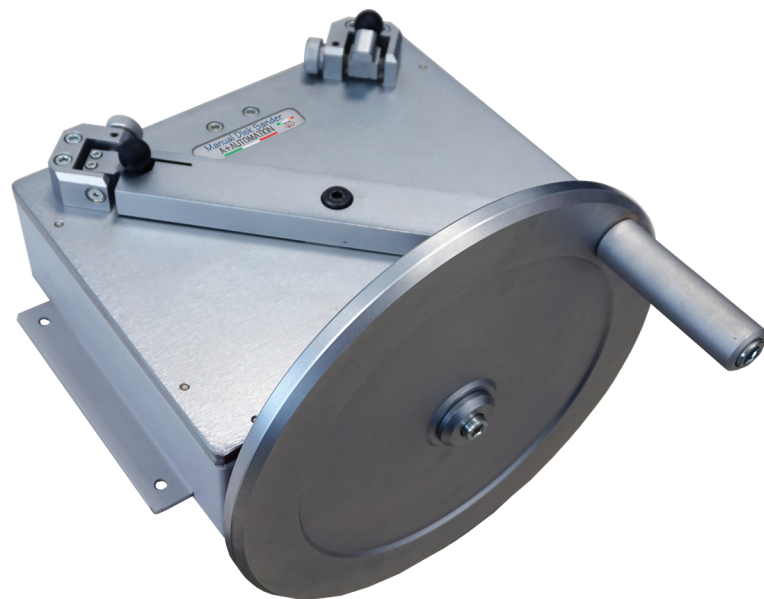
*It utilizes 30 cm (12") abrasive disks.*

*The Disk Sander is simple to use and its heavy duty construction is made to last.*

*Suitable for the custom framer or the high volume shop.*

### Data Sheet

Working angle:	45°
Clamping type:	mechanical
Movement:	manual
Dimensions (body):	500 x 700 x 80 mm 19.7" x 27.6" x 3.15"
Fly-wheel diameter:	Ø 30 cm (12")



### Standard Accessories



Three abrasive Discs



45° template



Lag bolts



Metric Allen wrenches

## Mini Mitre Fillet Cutter



*Hand operated cutter for cuttings (45°) fillets of wood and plastic profiles.*

*Equipped with a 1000 mm measurement gauge. it has an adjustable stop that allows the exact reading of cutting length.*

*Easy to install, it can be used in every working place.*

### Data Sheet

Cutting Angle:	45°
Operations:	manual
Maximum cutting Dimension:	20x10 mm / 0.78" x 0.39"
Dimensions:	1150 x 110 x 390 mm 45.28" x 4.33" x 15.35"